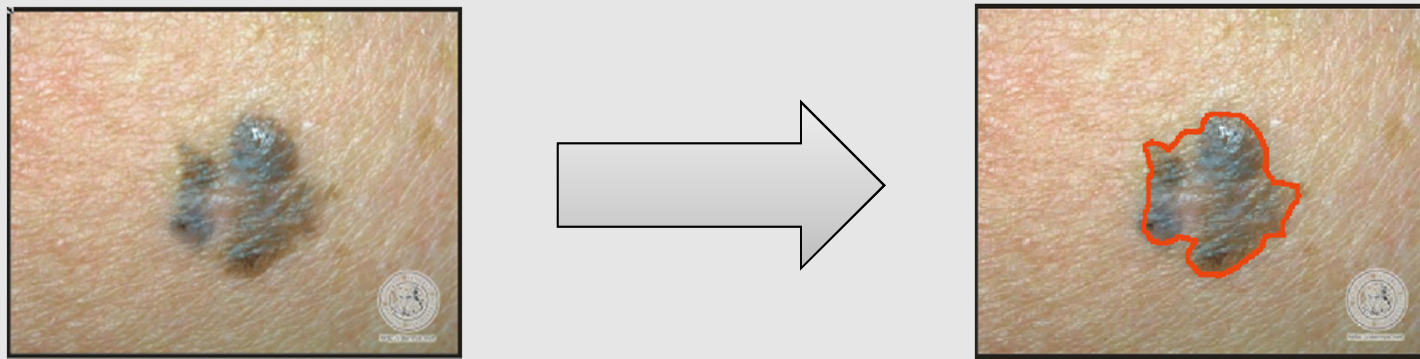


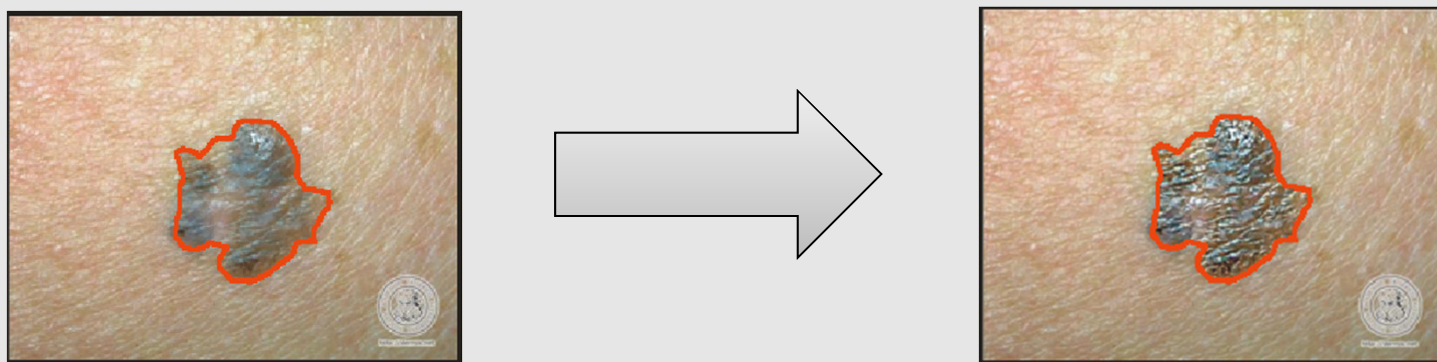
Semi-Automated Diagnosis of Melanoma Through the Analysis of Dermatological Images

Alessandro Parolin¹, Eduardo Herzer¹, Cláudio R. Jung²

- Segmentation of lesions using Snakes + Wavelets;



- Post-processing (edge enhancement);



Semi-Automated Diagnosis of Melanoma Through the Analysis of Dermatological Images

- Feature extraction from the lesion;



- Asymmetry index;
- Irregularity;
- RGB Color Variance;
- Lab Mean Values;
- Relative Chromaticity;

- Reduction of attributes using MDA-FKT;
- Final classification using Bayesian Classifier;
 - Penalization of False Positives and False Negatives can be adjusted;
 - Accuracy of **82,95%** with low False Negative rate (**1,89%**);